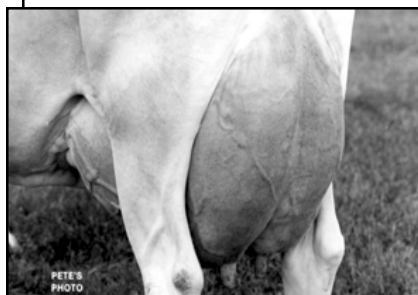


44th National Heifer Sale



AVON ROAD DUNCAN LORETTA-ET, E-94%
Great-Grandam of Lot 7



AVON ROAD DUNCAN LORETTA-ET



AVON ROAD TOP BRASS MEG
Fifth Dam of Lot 7

LOT 7 AVON ROAD AMERICAN LAURO USA 111926280

BORN 12/28/2000 TATTOO S211 P9 STRANDBERG D L & HOYT BREEDER & OWNER
FEMALE ALMA CENTER, WI 54611-0185
715/964-5441 (H)

PA 868M 42F 34P 310CM\$ 292NM\$ 236FM\$
PA TYPE 1.8 PTI 214
ST SR BD DF RA TW RL FA
2.2 1.2 2.2 2.2 L1.6 1.1 P0.2 SO.5
FU RH RW UC UD TP TL
0.8 2.4 2.2 0.6 SO.4 CO.4 LO.1

SELLING OPEN

SI RE:
AL-TOP ALL AMERICAN
000661339 7JE399
USDA 05/01/2001 207DAUS 114HRDS 12%RI P
93R 965M 0.1% 61F 31%LE
93R 0% 35P 254CM\$ 241NM\$ 201FM\$
AJCA 05/01/2001 76DAUS
PTI 93R 225 PTAT 87R 1.7

DAM:
AVON ROAD RYAN LOTTI E
110061113 TATTOO S101
DHI HERD #35-27-0174 CONTROL #101

2-00 295 2 18040 4.6 829 3.8 684 94DCR 2218C
3-01 112 2 8363 3.5 289 5.0 414 RIP
19486 --- 714 --- 974 PME
305 2X ME AVG 1L 22358M 1026F 861P 2765C

2-02 90% 3-06 92%
ST SR BD DF RA TW RL FA FU RH RW UC UD TP TL
35 35 36 43 27 32 25 25 36 50 48 25 25 25 18

PPA 2240M 85F 96P
YD 2771M 115F 124P
USDA PTA 05/01/2001 2RECS 44R 98%LE
771M 24F 34P 365CM\$ 344NM\$ 271FM\$
AJCA 05/01/2001 PTAT 39R 1.9 PTI 44R 203

MOLLY BROOK BRASS MAJOR
USA 000644248 29JE2865
USDA 05/01/2001 11064DAUS 2845HRDS 4%RI P
99R 356M 0.14% 40F 16%LE
99R 0.02% 16P 190CM\$ 180NM\$ 144FM\$
AJCA 05/01/2001 2918DAUS
PTI 99R 149 PTAT 99R 2.0

ALTHEAS LESTER OF AL-TOP TWO-ET 88%
USA 003774388 TATTOO C222
1-10 305 2 14830 5.1 755 4.1 611 DHI R 1990C
3-00 305 2 14700 4.9 713 4.0 587 DHI R 1907C
305 2X ME AVG 2L 17650M 868F 708P 2303C
PPA 2078M 149F 119P
YD 2183M 183F 138P
USDA PTA 05/01/2001 2RECS 72R 92%LE
572M 47F 36P 291CM\$ 258NM\$ 130FM\$
AJCA 05/01/2001 PTAT 70R 0.7 PTI 72R 210

AVON ROAD RYAN
USA 000666148
PA 236M -5F 10P 99CM\$ 94NM\$ 74FM\$
PA TYPE 0.9 PTI 54

AVON ROAD BERRETTA LOLI TA-ET 90%
USA 003912340 TATTOO R25
2-04 305 2 14360 4.8 686 3.9 564 DHI R 1834C
3-05 305 2 18650 4.8 886 3.8 704 94DCR 2290C
4-05 305 2 22220 4.9 1085 3.9 869 94DCR 2828C
305 2X ME AVG 3L 19418M 926F 752P 2440C
PPA 687M -7F 45P
YD 1059M 27F 66P
USDA PTA 05/01/2001 4RECS 62R 97%LE
669M 18F 31P 341CM\$ 321NM\$ 247FM\$
AJCA 05/01/2001 PTAT 56R 2.1 PTI 62R 186
SIRE: MASON BOOMER SOONER BERRETTA PTI 186 64%LE

SI STERS(S):
AVON ROAD SOONER TWICE 89%
3-08 283 2 11630 4.4 512 3.8 439 DHI R 1392C
AVON ROAD BERRETTA LORENA-ET 90%
3-05 285 2 16200 5.0 813 3.8 610 93DCR 1984C
AVON ROAD BARBER LAVONE-ET 85%
2-08 305 2 14640 5.3 780 3.8 563 94DCR 1832C
AVON ROAD ADONIS LETTY-ET 90%
2-11 305 2 20860 4.5 947 3.5 738 91DCR 2398C

NEXT DAM:
AVON ROAD DUNCAN LORETTA-ET 94%
4-09 305 2 23120 5.3 1215 3.6 841 DHI R V 2734C
OVER 190,000 LBS. MILK LI FETI ME
SIRE: SOLDIERBOY BOOMER SOONER OF CJF PTI 53 2%LE

5TH DAM:
AVON ROAD TOP BRASS MEG 92%
4-03 365 2 26980 4.9 1315 3.7 999 DHI R 3249 C
DAM OF AVON ROAD TRADER-ET PTI 86 2%LE

SUPPORTING JERSEY YOUTH