

44th National Heifer Sale



DUTCH HOLLOW BRASS HOHO, VG-86%
Grandam of Lot 68

LOT 68 DEBOER DECLOS VANESSA F413-ET USA 111949447

BORN 09/29/1999 TATTOO F413 / F413 P9
FEMALE
PA 1081M 28F 42P 359CM\$ 340NM\$ 276FMS
PA TYPE 1.0 PTI 219
ST SR BD DF RA TW RL FA
-0.4 0.2 1.2 HO.0 0.2 PO.0 LO.1
FU RH RW UC UD TP TL
1.0 1.2 1.3 -0.1 DO.4 CO.7 LO.8

NI CO DEBOER BREEDER & OWNER
CHANDLER, TX 75758-7667
903-849-6097 (H)
HI LLTOPJERSEY@TYLER.NET

MASON BOOMER SOONER BERRETTA
USA 000651835 7JE254
USDA 05/01/2001 20971DAUS 2282HRDS 15%RI P
99%R 759M -0.17% 7F 64%I LE
99%R 0.06% 36P 340CM\$ 316NM\$ 227FMS
AJCA 05/01/2001 12350DAUS
PTI 99%R 186 PTAT 99%R 2.1

BARBS SKYLINE DANNI 86%
USA 003718773 TATTOO M154
2-04 305 2 23230 3.5 824 3.7 866 DHI R 2450C
4-09 257 2 12850 3.8 488 3.9 499 DHI R 1434C
305 2X ME AVG 2L 21081M 760F 791P 2249C
PPA 3216M 37F 124P
YD 3869M 50F 150P
USDA PTA 05/01/2001 3RECS 70%R 90%I LE
1292M 22F 51P 262CM\$ 238NM\$ 157FMS
AJCA 05/01/2001 PTAT 63%R 0.1 PTI 69%R 193

BRED: 11/11/2000 DUE: 08/17/2001 TO
ROCK MAPLE BROOK MANNI X
USA 000660210 140JE330
USDA 05/01/2001 36DAUS 27HRDS 6%RI P
83%R 1225M 0.06% 66F 84%I LE
83%R -0.01% 41P 399CM\$ 389NM\$ 361FMS
AJCA 05/01/2001 30DAUS
PTI 83%R 267 PTAT 78%R 1.7

SIRE:
BARBS MBSB DECLO
000660532 7JE386
USDA 05/01/2001 116DAUS 82HRDS 8%RI P
93%R 1415M -0.2% 30F 86%I LE
93%R 0.02% 53P 415CM\$ 393NM\$ 323FMS
AJCA 05/01/2001 75DAUS
PTI 93%R 262 PTAT 88%R 1.4

DAM:
DUTCH HOLLOW POINTER HI HO
003983432 TATTOO C688 / C688
DHI HERD #74-81-0162 CONTROL #782
1-10 305 3 16420 4.6 763 4.0 651 DHI R 2071C
365 3 19009 4.7 895 4.0 761 DHI R
4-01 214 3 17870 5.0 900 3.7 658 RIP
22094 --- 1148 --- 780 PME
305 2X ME AVG 1L 19789M 894F 779P 2448C
2-03 85% 4-07 87%
ST SR BD DF RA TW RL FA FU RH RW UC UD TP TL
34 36 34 38 22 28 32 27 32 36 40 25 24 34 25
PPA 1730M 65F 72P
YD 2005M 78F 88P
USDA PTA 05/01/2001 2RECS 57%R 95%I LE
747M 27F 31P 303CM\$ 287NM\$ 229FMS
AJCA 05/01/2001 PTAT 54%R 0.6 PTI 58%R 176

SISTERS(S):
DUTCH HOLLOW SYMBOL HOLIDAY 80%
5-05 305 2 19450 4.7 912 3.9 763 DHI R 2455C
DUTCH HOLLOW LAWMAN HA HA 85%
3-11 296 2 18710 5.3 996 4.0 742 DHI R 2415C

HL LESTER POINTER
USA 000657785 14JE278
USDA 05/01/2001 218DAUS 87HRDS 72%RI P
94%R 647M -0.12% 10F 41%I LE
94%R 0.02% 26P 282CM\$ 269NM\$ 225FMS
AJCA 05/01/2001 159DAUS
PTI 95%R 143 PTAT 93%R 0.9

DUTCH HOLLOW BRASS HOHO 86%
USA 003558559 TATTOO DHF / G50
2-01 305 2 16390 4.7 773 3.9 639 DHI R 2071C
3-05 305 2 18250 4.8 881 3.8 695 DHI R 2261C
4-06 305 2 20710 4.8 1002 3.7 773 DHI R 2514C
5-06 305 2 19100 4.9 929 3.9 747 DHI R 2431C
7-02 305 2 20680 4.9 1021 3.6 746 DHI R V 2425C
8-07 305 2 21130 4.9 1036 3.7 792 DHI R 2576C
9-10 305 2 18650 5.1 951 3.8 709 DHI R 2307C
305 2X ME AVG 7L 20700M 1006F 780P 2534C
PPA 2308M 119F 87P
YD 1495M 82F 58P
USDA PTA 05/01/2001 5RECS 72%R 85%I LE
558M 31F 22P 217CM\$ 207NM\$ 172FMS
AJCA 05/01/2001 PTAT 63%R -0.3 PTI 72%R 133
SIRE: A-NINE TOP BRASS PTI -55 0%I LE

SISTERS(S):
DUTCH HOLLOW BERNARD HARMONY-P 80%
3-11 305 2 20780 4.7 974 3.5 736 DHI R 2392C
DUTCH HOLLOW SOONER HADDY 79%
3-10 305 2 17780 4.2 744 3.5 629 DHI R 2008C
DUTCH HOLLOW MALCOLM HIGHNESS-P 88%
5-09 305 2 19860 4.5 888 3.5 700 99DCR 2275C
DUTCH HOLLOW HAWTHORN-P-ET 80%
2-10 305 2 19810 5.0 991 3.7 736 99DCR 2394C
DUTCH HOLLOW MBSB HOLLYHOCK-ET 83%
2-01 298 2 15400 4.6 707 3.6 555 99DCR 1804C

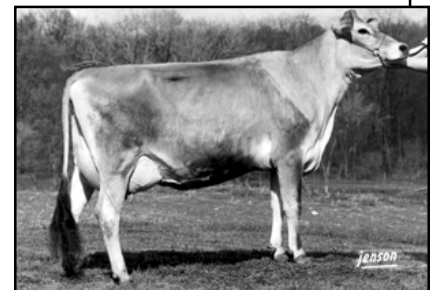
NEXT DAM:
DUTCH HOLLOW CROWN HOSTESS-P 93%
6-10 305 2 22510 4.1 919 3.8 846 DHI R 2575C
SIRE: THE CROWN ROYAL-ET PTI -87 0%I LE



DUTCH HOLLOW BERNARD HARMONY-P
Sister to the Grandam of Lot 68



DUTCH HOLLOW MALCOLM HIGHNESS-P
Sister to the Grandam of Lot 68



DUTCH HOLLOW CROWN HOSTESS-P
Great-Grandam of Lot 68

4TH DAM:
DUTCH HOLLOW GEN HOLLY-P 83%
8-09 293 2 13020 4.3 560 3.5 451 DHI R 1465C