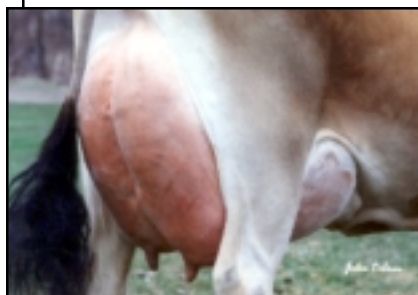


44th National Heifer Sale



BOHNERTS BUCK ABIGALE, E-90%
Dam of Lot 67



BOHNERTS BUCK ABIGALE
Dam of Lot 67

LOT 67 BOHNERTS MANNIX ABBY USA 11158375

BORN 09/29/1999 TATTOO B203 P9
FEMALE

PA 1092M 51F 40P 381CMS 367NMS 322FMS
PA TYPE 1.5 PTI 247

ST	SR	BD	DF	RA	TW	RL	FA
0.8	0.8		2.1	HO. 4	0.9	SO. 4	SO. 3
FU	RH	RW	UC	UD	TP	TL	
0.8	1.8	2.1	0.6	DO. 7	C1. 0	LO. 2	

BRIAN BOHNERT BREEDER & OWNER
EAST MOLINE, IL 61244-9424
309/496-2086 (H)
JBOHNERT@DERBYTECH.COM

BRED: 11/28/2000 DUE: 09/03/2001 TO
MOLLY BROOK GLNWOOD FREEDOM-ET
USA 000662338 7JE424

USDA 05/01/2001 53DAUS 41HRDS 13%RIP
86%R 1727M -0.06% 69F 94%ILE
86%R -0.1% 43P 433CMS 443NMS 505FMS

AJCA 05/01/2001 30DAUS
PTI 85%R 293 PTAT 77%R 1.7

MOLLY BROOK BRASS MAJOR
USA 000644248 29JE2865
USDA 05/01/2001 11064DAUS 2845HRDS 4%RI P
99%R 356M 0.14% 40F 16%ILE
99%R 0.02% 16P 190CMS 180NMS 144FMS

AJCA 05/01/2001 2918DAUS
PTI 99%R 149 PTAT 99%R 2.0

ROCK MAPLE BV MARIA THERESA-ET 86%
USA 003721380 TATTOO RMF / 708

1-11	305	2	16960	4.5	762	3.6	617	DHI R	2006C
2-11	305	2	18400	5.1	945	3.9	722	DHI R	2350C
			365	2	21124	5.2	1089	4.0	842
4-03	305	2	19710	4.5	878	3.9	766	DHI R	2405C
			365	2	22382	4.5	997	3.9	879
5-08	305	3	16540	4.7	774	4.1	670	DHI R	2114C
7-00	305	2	17750	4.8	846	3.8	676	93DCR	2199C
8-03	205	2	13950	4.4	620	3.3	463	68DCR	1503C
305 2X ME AVG			6L 18784M		870F		704P		2263C
PPA	2155M	93F	91P						
YD	2298M	110F	94P						
USDA PTA	05/01/2001	5RECS	72%R	97%ILE					
	1120M	52F	44P	345CMS	325NMS	255FMS			
AJCA	05/01/2001	PTAT	65%R	0.4	PTI	71%R	221		

SIRE:
ROCK MAPLE BROOK MANNIX
000660210 140JE330

USDA 05/01/2001 36DAUS 27HRDS 6%RIP
83%R 1225M 0.06% 66F 84%ILE
83%R -0.01% 41P 399CMS 389NMS 361FMS

AJCA 05/01/2001 30DAUS
PTI 83%R 267 PTAT 78%R 1.7

LONG DISTANCE BERRETTA BUCK-ET
USA 000661545 7JE397

USDA 05/01/2001 232DAUS 125HRDS 11%RI P
92%R 231M -0.02% 7F 13%ILE
92%R 0.03% 13P 164CMS 153NMS 112FMS

AJCA 05/01/2001 63DAUS
PTI 92%R 102 PTAT 86%R 2.0

DAM:
BOHNERTS BUCK ABIGALE
110109686 TATTOO B143
DHI HERD #33-78-0522 CONTROL #197

1-10	305	2	20640	4.5	920	3.7	761	100DCR	V 2463C
3-00	128	2	10022	4.3	435	3.6	364	RIP	
305 2X ME AVG			1L 27651M		1206F		1016P		3253C

BOHNERTS BE-MAGI C ACCLAIM ANN-P 87%
USA 003930257 TATTOO B91

2-00	305	2	19120	5.1	984	4.0	756	DHI R	2461C
3-01	288	2	22130	5.3	1163	3.9	858	99DCR	2792C
4-01	305	2	26270	5.0	1326	3.9	1026	99DCR	3339C
5-01	128	2	10859	5.4	584	3.8	415	RIP	
305 2X ME AVG			3L 24506M		1250F		960P		3124C
PPA	2744M	184F	120P						
YD	2251M	156F	106P						
USDA PTA	05/01/2001	4RECS	63%R	96%ILE					
	810M	52F	38P	333CMS	308NMS	216FMS			
AJCA	05/01/2001	PTAT	55%R	-0.3	PTI	63%R	218		
SIRE:	HI -LAND BE-MAGI C-P				PTI	142	11%ILE		

2-06	89%	3-03	90%											
ST	SR	BD	DF	RA	TW	RL	FA	FU	RH	RW	UC	UD	TP	TL
25	32	34	35	26	27	27	25	32	41	48	25	20	26	27

PPA 2839M 83F 100P
YD 3318M 88F 114P

USDA PTA 05/01/2001 2RECS 54%R 98%ILE
959M 36F 38P 363CMS 345NMS 284FMS

AJCA 05/01/2001 PTAT 52%R 1.4 PTI 55%R 227

NEXT DAM:
CLOVER FARMS TRUMPET ACCLAIM 90%
5-03 305 2 21080 5.1 1077 3.8 792 DHI R 2576C
SIRE: TOP BRASS TRUMPET PTI -44 0%ILE

SUPPORTING JERSEY YOUTH