

44th National Heifer Sale



GR CCJ BARBER MOLLY, E-90%
Dam of Lot 5

LOT 5 GR CCJ DANIEL MASTERPIECE USA 111885116

BORN 01/21/2001 TATTOO I 14 / I 14 P8
FEMALE

PA 1114M 46F 30P 272CMS 274NMS 300FMS
PA TYPE 0.7 PTI 189

ST	SR	BD	DF	RA	TW	RL	FA
-0.4	0.1		1.7	HO.8	0.2	SO.8	LO.4
FU	RH	RW	UC	UD	TP	TL	
0.0	0.6	0.9	-0.4	DO.6	WO.2	SO.0	

CHARLES ARLEN BREEDER & OWNER
NEW VIENNA, IA 52065
319/921-3685 (H)

SELLING OPEN

BOLD VENTURE
USA 000635377 1JE221
USDA 05/01/2001 3608DAUS 892HRDS 2%RI P
99%R 151M 0.09% 21F 1%I LE
99%R 0.11% 23P 53CMS 22NMS -104FMS
AJCA 05/01/2001 2040DAUS
PTI 99%R 57 PTAT 99%R -0.8

MVF DUNCAN DANIELLE 83%
USA 003552690 TATTOO H44 / H44
2-02 305 2 12220 5.2 637 3.7 452 DHI R 1470C
3-06 305 2 18190 4.6 834 3.7 668 DHI R 2172C
5-01 305 2 22780 4.6 1056 3.3 754 DHI R 2448C
6-04 305 2 23650 4.4 1047 3.5 820 DHI R 2664C
7-07 305 2 24390 4.6 1110 3.6 880 DHI R 2861C
8-11 305 2 20880 4.6 970 3.5 731 DHI R 2375C
305 2X ME AVG 6L 21499M 995F 758P 2463C
PPA 3055M 172F 93P
YD 2980M 167F 89P
USDA PTA 05/01/2001 5RECS 74%R 98%I LE
1159M 65F 33P 367CMS 367NMS 380FMS
AJCA 05/01/2001 PTAT 67%R 0.4 PTI 73%R 241

SI RE:
MVF BOLD VENTURE DANIEL
000656178 1JE1325
USDA 05/01/2001 1723DAUS 413HRDS 46%RI P
99%R 1833M -0.11% 65F 93%I LE
99%R -0.07% 52P 431CMS 431NMS 454FMS
AJCA 05/01/2001 1082DAUS
PTI 99%R 293 PTAT 99%R 0.8

DAM:
GR CCJ BARBER MOLLY
111484940 TATTOO E98
DHI HERD #42-31-0550 CONTROL #2015

2-2 305 2 18764 5.0 933 3.5 940 DHI R
365 2 21944 5.0 1108 3.5 768 DHI R

3-07 90%
ST SR BD DF RA TW RL FA FU RH RW UC UD TP TL
30 32 34 41 20 27 34 25 34 36 42 26 25 26 27

PPA 1486M 86F 40P
YD 608M 92F 20P
USDA PTA 05/01/2001 2RECS 49%R 65%I LE
394M 26F 8P 113CMS 118NMS 145FMS
AJCA 05/01/2001 PTAT 0.6 PTI 46%R 85

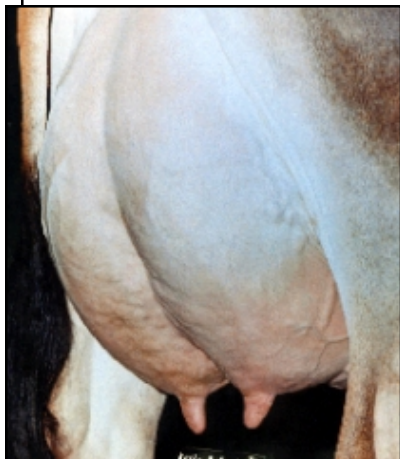
SISTERS(S):
GR CCJ HERMI TAGE RAQUEL
4-06 251 2 16430 4.6 760 3.7 615 92DCR 2000C

WF/L&M DUNCAN BARBER-ET
USA 000654500 7JE290
USDA 05/01/2001 6608DAUS 1369HRDS 22%RI P
99%R 898M 0.02% 44F 46%I LE
99%R -0.05% 23P 277CMS 281NMS 310FMS
AJCA 05/01/2001 3575DAUS
PTI 99%R 187 PTAT 99%R 1.6

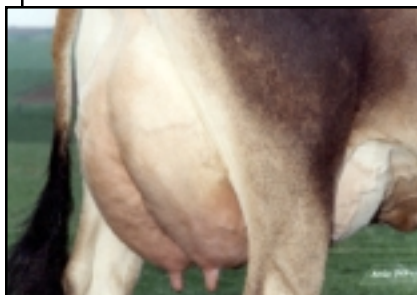
PR CCJ 29 RHONDA
USA 368047988 TATTOO A92
2-0 305 2 15820 4.3 684 3.7 583 DHI R
3-1 305 2 18740 4.6 870 3.8 704 DHI R
365 2 22050 4.7 1042 3.8 838 DHI R
4-5 305 2 15002 4.8 726 4.0 606 DHI R
PPA -1179M -12F -25P
YD -1806M -8F -30P
USDA PTA 05/01/2001 2RECS 50%R 12%I LE
-267M -9F -10P -127CMS -123NMS -109FMS
AJCA 05/01/2001 PTAT 26%R -0.3 PTI 47%R -55
SI RE: SOLDI ERBOY BOOMER SOONER OF CJF PTI 53 2%I LE



GR CCJ BARBER MOLLY



GR CCJ BARBER MOLLY



GR CCJ BARBER MOLLY

SUPPORTING JERSEY YOUTH