

44th National Heifer Sale



PRICELAND BERRETTA TERRIFIC-ET, VG-85%
Dam of Lot 4



LYNVAIL VIEW TERRI-ET
Sister to Lot 4

LOT 4 LYNVAIL HYDE TERESA-ET USA 111840113

BORN 01/21/2001 TATTOO D331 / D331
FEMALE

PA +926M +60F +40P +403CMS +380NMS +302FMS

SELLING OPEN

BROTHER(S):
LYNVAIL TERRIFIC VIEW-ET AT ALTA GENETICS
LYNVAIL TORRE-ET AT GENEX / CRI

SISTER(S):
LYNVAIL VIEW TERRI-ET 83%
1-08 305 2 17430 4.5 779 3.7 646 100DCR 2088C
RANKS 155TH IN THE NATION FOR PTI

SIRE:
ISNZ WHELDON HYDE SJ3
00096441
INTERBULL EVALUATION 5-01
+261M +0.22% +48F +0.08 +23P
+256CMS +230NMS +127FMS 24%ILE

DAM:
PRICELAND BERRETTA TERRIFIC-ET
003952470 TATTOO P98
DHI HERD #21-10-0357 CONTROL #1085

2-02 305 2 17350 4.8 831 3.9 677 DHIR 2203C
3-06 305 2 23030 4.6 1059 3.7 857 99DCR 2787C
365 2 26313 4.7 1228 3.8 996

305 2X ME AVG 2L 23209M 1066F 879P 2851C
2-03 82% 3-01 87% 3-11 85%
ST SR BD DF RA TW RL FA FU RH RW UC UD TP TL
25 22 24 38 22 25 25 24 34 35 39 22 18 29 29

PPA 4225M 189F 154P
YD 3777M 167F 143P
USDA PTA 05/01/2001 2RECS 60%R 99%ILE
1590M 72F 56P 549CMS 530NMS 476FMS
AJCA 05/01/2001 PTAT 58%R 1.9 PTI 60%R 344
RANKS 39TH IN THE NATION FOR PTI

BROTHER(S):
PRICELAND BERRETTA TORY-ET AT ABS GLOBAL
PRICELAND BERRETTA TREVOR AT ALTA GENETICS
PTI 220 76%ILE
PRICELAND KHAN TRAVIS-ET AT ALTA GENETICS
PRICELAND KHAN THAD-ET AT SIRE POWER
PRICELAND PITINO THOR-ET AT GENEX / CRI
PRICELAND PITINO TRIGG-ET AT SELECT SIRE

SISTERS(S):
PRICELAND BERRETTA TEDDY-ET 90%
2-04 305 2 23780 5.4 1280 3.6 864 DHIR 2809C
PRICELAND BERRETTA TALLY-ET 87%
2-02 305 2 24150 4.5 1094 3.5 852 DHIR 2769C
PRICELAND BERRETTA TABATHA-ET 86%
1-10 305 2 22390 5.3 1194 3.6 798 94DCR 2594C
RANKS 118TH IN THE NATION FOR PTI
PRICELAND KHAN TOTAL-ET 77%
2-04 305 2 16440 5.3 874 3.8 626 100DCR 2166C

PETER C VAIL BREEDER & OWNER
KINDERHOOK, NY 12106-0526
518/758-9233 (H)
CAROVAI L@GTE. NET

GOODTIMES CHARLIE-ET
USA 000652162 29JE3059
USDA 05/01/2001 6567DAUS 1792HRDS 3%RI P
98%R 498M -0.03% 18F 2%ILE
98%R 0.02% 21P 99CMS 88NMS 47FMS
AJCA 05/01/2001 307DAUS
PTI 98%R 95 PTAT 97%R -0.2

DAM
NZL R19910008

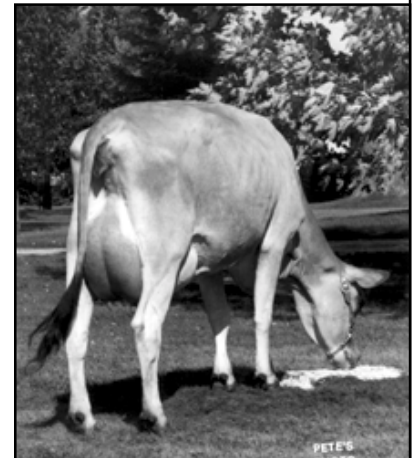
MASON BOOMER SOONER BERRETTA
USA 000651835 7JE254
USDA 05/01/2001 20971DAUS 2282HRDS 15%RI P
99%R 759M -0.17% 7F 64%ILE
99%R 0.06% 36P 340CMS 316NMS 227FMS
AJCA 05/01/2001 12350DAUS
PTI 99%R 186 PTAT 99%R 2.1

AU TWILIGHTS TERESA-ET 90%
USA 003857375 TATTOO AU421
2-02 305 2 22480 5.2 1166 3.8 849 DHIR V 2762C
4-05 184 2 18170 5.7 1032 3.0 545 DHIR 1766C
305 2X ME AVG 2L 28089M 1493F 945P 3068C
PPA 4481M 300F 105P
YD 4797M 309F 110P
USDA PTA 05/01/2001 2RECS 69%R 99%ILE
1761M 110F 45P 482CMS 490NMS 546FMS
AJCA 05/01/2001 PTAT 64%R 1.5 PTI 69%R 335
SIRE: DUNCAN DUKE OF GLENWOOD PTI 114 13%ILE

SISTERS(S):
AU TWILIGHTS GLENWOOD TETONIA-ET 77%
4-06 297 2 20280 4.9 994 3.9 794 99DCR 2584C
AU TWILIGHTS GLENWOOD TRACI 87%
2-01 305 2 15760 4.2 668 3.5 556 DHIR 1792C
AU TWILIGHTS TWILA-ET 91%
3-02 305 2 18290 4.7 863 3.6 656 97DCR 2132C
AU TWILIGHTS TEAROSE-ET 86%
3-08 305 2 22180 5.0 1108 3.8 849 99DCR 2762C
RANKS 78TH IN THE NATION FOR PTI
AU TWILIGHTS TEENA-ET 90%
3-04 305 2 19590 4.8 931 4.0 780 98DCR 2508C
RANKS 100TH IN THE NATION FOR PTI
AU TWILIGHTS TEACUP-ET 90%
3-02 305 2 21640 4.6 998 3.9 851 98DCR 2708C
RANKS 96TH IN THE NATION FOR PTI

NEXT DAM:
AU DUNCAN SOONER TWILIGHT 90%
4-11 365 2 30360 4.9 1491 4.2 1286 DHIR 4069C
SIRE: SOLDIERBOY BOOMER SOONER OF CJF PTI 53 2%ILE
20TH HIGH PROTEIN RECORD IN HISTORY

4TH DAM:
AU DUNCAN LEGEND TIPSY 90%
6-09 365 2 29920 5.3 1582 3.8 1150 DHIR 3742C



AU TWILIGHTS TERESA-ET
Grandam of Lot 4



PRICELAND BERRETTA TEDDY-ET
Full Sister to the Dam of Lot 4



AU DUNCAN SOONER TWILIGHT
Great-Grandam of Lot 4