



**CAVE CREEK 774 HOF YAHOO, VG-88%**  
Dam of Lot 24

**LOT 24 CAVE CREEK 857 PITINO YVONNE-ET USA 111722309**

BORN 09/01/2000 TATTOO C857 P8  
FEMALE  
PA 166M 28F 27P 328CM\$ 291NM\$ 141FMS  
PA TYPE 0.7 PTI 178  
ST SR BD DF RA TW RL FA  
2.7 1.4 0.4 L1.4 0.6 PO.4 SO.7  
FU RH RW UC UD TP TL  
1.3 1.1 0.5 0.6 S1.8 CO.4 LO.5

LEROY C CLARK BREEDER & OWNER  
SPRING VALLEY, WI 54767  
715/778-4422 (H)  
CCJERSEY@WI.N.BRIGHT.NET

HIGHLAND DUNCAN LESTER  
USA 000645454 29JE2875  
USDA 05/01/2001 30310DAUS 4715HRDS 6%RI P  
99%R 471M -0.05% 14F 12%I LE  
99%R 0% 16P 142CM\$ 137NM\$ 125FMS  
AJCA 05/01/2001 7161DAUS  
PTI 99%R 97 PTAT 99%R 1.0

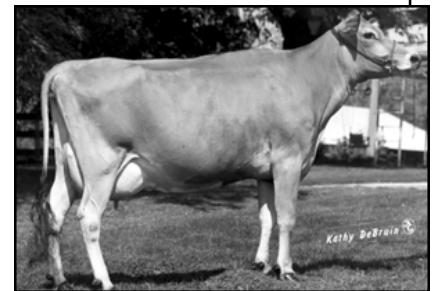
GREENRIDGE FW CHIEF ALTHEA-ET 92%  
USA 003507678 TATTOO GR1868  
2-02 305 3 17750 5.0 881 3.9 686 DHIR 2232C  
3-02 305 2 18950 4.7 892 3.8 712 DHIR 2316C  
4-11 305 2 20560 4.7 970 3.9 809 DHIR 2608C  
6-00 305 2 20360 4.5 913 3.8 777 DHIR 2474C  
10-04 305 2 21240 4.1 862 3.9 832 DHIR 2467C  
305 2X ME AVG 5L 21036M 948F 801P 2539C  
PPA 2321M 155F 118P  
YD 2226M 138F 107P  
USDA PTA 05/01/2001 3RECS 93%R 92%I LE  
410M 46F 35P 295CM\$ 256NM\$ 102FMS  
AJCA 05/01/2001 PTAT 92%R 0.0 PTI 93%R 206

ISDK SKAE HOF  
USA 000655179 29JE2974  
USDA 11/01/2000 134DAUS 64HRDS 4%RI P  
93%R -1060M 0.48% 23F 1%I LE  
93%R 0.22% -5P 65CM\$ 24NM\$ -161FMS  
AJCA 11/01/2000 45DAUS  
PTI 92%R 27 PTAT 81%R -1.3

GOSSERS YANKEE SANDY 89%  
USA 003647585 TATTOO G61  
1-11 305 2 12500 4.1 507 3.6 454 DHIR 1403C  
3-02 305 2 15520 4.2 651 3.6 559 DHIR 1769C  
4-03 305 2 18480 4.1 764 3.6 672 DHIR 2098C  
5-03 292 2 16900 4.2 711 3.7 631 DHIR 1961C  
6-03 294 2 18270 4.2 762 3.7 668 DHIR 2090C  
7-02 305 2 19900 3.9 784 3.6 718 DHIR 2190C  
8-02 305 2 21520 4.1 876 3.5 747 DHIR 2373C  
9-03 305 2 21070 3.9 822 3.5 734 94DCR 2270C  
10-04 305 2 21840 3.9 843 3.3 714 94DCR V 2275C  
305 2X ME AVG 9L 19706M 785F 685P 2147C  
PPA 1023M -34F 18P  
YD 625M -31F 12P  
USDA PTA 05/01/2001 5RECS 67%R 43%I LE  
116M -14F 3P 40CM\$ 40NM\$ 44FMS  
AJCA 05/01/2001 PTAT 54%R -0.7 PTI 66%R 5  
SIRE: YANKEE FW CHIEF PTI -24 0%I LE

SISTERS(S):  
GOSSERS PAL KAREN LIBERTEY 87%  
6-09 305 2 22290 4.4 976 3.6 811 DHIR 2617C

NEXT DAM:  
CIRCLE J SAMSON KAREN 90%  
9-11 275 2 17720 4.6 810 3.7 663 DHIR 2157C  
SIRE: GRAMHIL LEADER SOPHIA SAMSON PTI -179 0%I LE  
4TH DAM:  
CIRCLE J. POMPEY SYBIL KIM 90%  
5-02 305 2 13210 4.5 596 DHIR



**GOSSERS PAL KAREN LIBERTEY**  
Sister to the Grandam of Lot 24

SELLING OPEN

BROTHER(S):  
CAVE CREEK YOGI AT SELECT SIRE

SIRE:  
ALTHEAS LES PITINO AL-TOP-ET  
000658416 7JE342  
USDA 05/01/2001 1111DAUS 427HRDS 62%RI P  
98%R 93M 0.03% 9F 21%I LE  
98%R 0.09% 18P 237CM\$ 212NM\$ 108FMS  
AJCA 05/01/2001 476DAUS  
PTI 98%R 130 PTAT 97%R 1.6

DAM:  
CAVE CREEK 774 HOF YAHOO  
003948968 TATTOO C774  
DHI HERD #35-48-0870 CONTROL #82

1-11 305 2 14360 5.1 731 4.3 612 DHIR 1971C  
3-00 281 2 18010 5.0 904 4.4 797 DHIR 2492C  
3-10 305 2 24930 6.0 1489 4.3 1079 94DCR 3517C  
365 2 27918 6.0 1629 4.3 1203  
305 2X ME AVG 3L 22343M 1181F 953P 3037C

2-07 85% 3-04 88%  
ST SR BD DF RA TW RL FA FU RH RW UC UD TP TL  
37 32 38 47 30 28 25 26 19 34 35 38 19 25 36

PPA 2088M 192F 157P  
YD 1703M 169F 136P  
USDA PTA 05/01/2001 4RECS 60%R 98%I LE  
240M 47F 36P 419CM\$ 370NM\$ 174FMS  
AJCA 05/01/2001 PTAT 50%R -0.2 PTI 59%R 227  
NCL: 3RD FAT, SR. -3

SISTERS(S):  
CAVE CREEK 744 ERA PLUS YIPPEE 87%  
5-11 305 2 20100 4.8 963 3.9 783 94DCR 2548C