

# 44th National Heifer Sale



**OSCEOLA SOONER 44 THREE C, E-91%**  
Grandam of Lot 14

## LOT 14 BACHELORS DECLO LISA 759 USA 111768040

BORN 10/07/2000 TATTOO B759 P9  
FEMALE  
PA 1041M 29F 38P 316CM\$ 303NM\$ 262FM\$  
PA TYPE 0.9 PTI 198  
ST SR BD DF RA TW RL FA  
1.1 0.8 1.2 LO.1 0.7 PO.4 SO.4  
FU RH RW UC UD TP TL  
1.1 1.4 1.6 -0.3 DO.0 WO.4 L1.5

SELLING OPEN

SIRE:  
BARBS MBSB DECLO  
000660532 7JE386  
USDA 05/01/2001 116DAUS 82HRDS 8%RI P  
93%R 1415M -0.2% 30F 86%I LE  
93%R 0.02% 53P 415CM\$ 393NM\$ 323FM\$  
AJCA 05/01/2001 75DAUS  
PTI 93%R 262 PTAT 88%R 1.4

DAM:  
OSCEOLA AEROSTAR LILLY A 734  
003970034 TATTOO A734  
DHI HERD #34-12-0535 CONTROL #4  
1-09 305 2 13925 4.3 604 3.7 522 DHIR  
3-00 305 2 14350 4.8 686 3.9 556 97DCR 1809C  
4-00 202 2 11151 5.1 572 3.8 425 RIP  
16668 --- 805 --- 589 PME  
305 2X ME AVG 1L 15901M 735F 605P 1965C

2-04 86%  
ST SR BD DF RA TW RL FA FU RH RW UC UD TP TL  
32 25 28 34 29 25 17 26 37 34 35 28 45 20 34

PPA 1318M 66F 46P  
YD 913M 56F 30P  
USDA PTA 05/01/2001 3RECS 62%R 86%I LE  
667M 28F 22P 218CM\$ 213NM\$ 200FM\$  
AJCA 05/01/2001 PTAT 52%R 0.4 PTI 61%R 133

BROTHER(S):  
OSCEOLA MALCOM CI SCO-ET AT ABS GLOBAL  
PTI 97 13%I LE  
OSCEOLA MALCOM PANCHO AT ABS GLOBAL  
PTI 118 22%I LE

SISTERS(S):  
OSCEOLA DEXTER LI LLY MI TZI 81%  
5-00 305 2 17690 3.7 656 4.0 716 100DCR 1989C  
OSCEOLA BROOK LI LLY A 701-ET 87%  
4-11 305 2 22740 4.1 924 3.6 823 36DCR 2551C  
OSCEOLA BROOK LI LLY A 715-ET 92%  
3-05 305 2 28130 3.5 975 3.6 1016 DHIR 2886C  
OSCEOLA TURBO JET LI LLY A 716-ET 89%  
4-10 305 2 14900 4.9 735 3.7 551 100DCR 1906C  
OSCEOLA BENCHWOOD LI LLY A 718-ET 88%  
2-10 305 2 17510 5.0 881 3.8 659 DHIR 2144C  
OSCEOLA BROOK LI LLY A 725-ET 84%  
2-09 297 2 15640 4.3 668 3.7 576 DHIR 1819C

BACHELOR MAX & STEVE & FAMILY BREEDER & OWNER  
ANGOLA, IN 46703  
219/833-1256 (H)

MASON BOOMER SOONER BERRETTA  
USA 000651835 7JE254  
USDA 05/01/2001 20971DAUS 2282HRDS 15%RI P  
99%R 759M -0.17% 7F 64%I LE  
99%R 0.06% 36P 340CM\$ 316NM\$ 227FM\$  
AJCA 05/01/2001 12350DAUS  
PTI 99%R 186 PTAT 99%R 2.1

BARBS SKYLI NE DANNI 86%  
USA 003718773 TATTOO M154  
2-04 305 2 23230 3.5 824 3.7 866 DHIR 2450C  
4-09 257 2 12850 3.8 488 3.9 499 DHIR 1434C  
305 2X ME AVG 2L 21081M 760F 791P 2249C  
PPA 3216M 37F 124P  
YD 3869M 50F 150P  
USDA PTA 05/01/2001 3RECS 70%R 90%I LE  
1292M 22F 51P 262CM\$ 238NM\$ 157FM\$  
AJCA 05/01/2001 PTAT 63%R 0.1 PTI 69%R 193

ALTHEAS AEROSTAR-ET  
USA 000654781 1JE306  
USDA 05/01/2001 5033DAUS 1295HRDS 23%RI P  
99%R 478M 0.14% 45F 16%I LE  
99%R 0.08% 31P 212CM\$ 183NM\$ 70FM\$  
AJCA 05/01/2001 1780DAUS  
PTI 99%R 159 PTAT 99%R -0.7

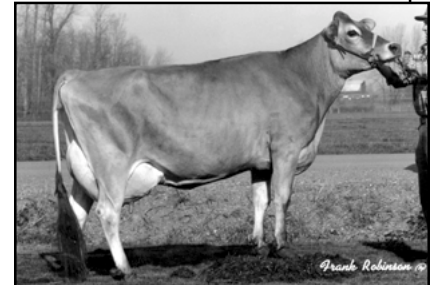
OSCEOLA SOONER 44 THREE C 91%  
USA 003674499 TATTOO C443  
2-02 305 2 20740 4.1 856 3.3 691 DHIR 2244C  
3-03 305 2 21790 3.8 826 3.5 770 DHIR V 2325C  
4-09 305 2 19970 4.2 835 3.6 712 DHIR 2262C  
5-10 292 2 17960 3.9 707 3.7 659 DHIR 1991C  
6-09 186 2 11840 4.1 482 3.5 419 DHIR 1316C  
305 2X ME AVG 5L 21384M 849F 743P 2318C  
PPA 3404M 50F 85P  
YD 2849M 31F 64P  
USDA PTA 05/01/2001 5RECS 80%R 92%I LE  
1256M 11F 28P 248CM\$ 260NM\$ 328FM\$  
AJCA 05/01/2001 PTAT 74%R 1.3 PTI 79%R 143  
SIRE: SOLDI ERBOY BOOMER SOONER OF CJF PTI 53 2%I LE

NEXT DAM:  
OSCEOLA LESTER 33 ZERO A 80%  
1-11 305 2 15660 4.7 737 3.7 584 DHIR 1899C  
SIRE: HIGHLAND DUNCAN LESTER PTI 97 12%I LE

4TH DAM:  
OSCEOLA YANKEE 7 FOUR C 78%  
4-02 305 2 18040 4.1 743 3.4 615 DHIR 1987C



**OSCEOLA BENCHWOOD  
LILLY A 718-ET**  
Sister to Lot 14



**OSCEOLA LESTER 33 ZERO A**  
Great-Grandam of Lot 14

SUPPORTING JERSEY YOUTH