



O. F. LESTER LADYSLIPPER, E-94%
Dam of Lot 10

LOT 10 O.F. PARAGON TIGERLILY-ET USA 111898406

BORN 11/26/2000 TATTOO X1421 P9
FEMALE

OWENS FARMS INC BREEDER & OWNER
FREDERIC, WI 54837
715/653-2663 (H)

PA 560M 40F 35P 387CM\$ 354NM\$ 232FM\$
PA TYPE 1.8 PTI 235
ST SR BD DF RA TW RL FA
2.0 1.6 1.6 L1.0 1.4 PO.2 SO.6
FU RH RW UC UD TP TL
1.8 2.3 2.2 1.4 S1.1 CO.9 LO.2

SELLING OPEN

BROTHER(S):
O. F. SELECT SNI PER-ET AT GENEX / CRI
O. F. SELECT SLOAN-ET AT ACCELERATED GENETICS
O. F. MONTANA SABER-ET AT NETWORK GENETICS
O. F. MONTANA LEAD FORCE-ET AT ABS GLOBAL
O. F. MONTANA SAWYER-ET AT SELECT SIRES
O. F. TACO LAZER-ET AT NETWORK GENETICS

SISTER(S):
O. F. ALF ORCHID 83%
2-10 305 2 14380 5.0 725 4.1 589 99DCR 1918C

SIRE:
H&B ALF PARAGON-ET
000663209 29JE3161
USDA 05/01/2001 146DAUS 81HRDS 6%RI P
90%R 221M 0.13% 31F 55%I LE
90%R 0.13% 30P 333CM\$ 293NM\$ 134FM\$
AJCA 05/01/2001 44DAUS
PTI 89%R 203 PTAT 80%R 1.5

DAM:
O. F. LESTER LADYSLIPPER
003825681 TATTOO N082
DHI HERD #35-49-0017 CONTROL #2128

1-10 305 2 14500 5.2 757 4.2 603 DHIR 1964C
3-02 305 2 19390 5.1 991 4.2 822 DHIR 2661C
4-11 305 2 18670 5.2 967 3.8 713 DHIR 2320C
6-00 305 2 20680 4.7 976 3.9 809 99DCR 2617C
305 2X ME AVG 4L 20675M 1030F 823P 2672C

2-01 88% 3-07 93% 6-07 94%
ST SR BD DF RA TW RL FA FU RH RW UC UD TP TL
39 32 39 50 29 36 20 37 35 46 50 25 16 27 31

PPA 2870M 157F 132P
YD 2725M 147F 124P
USDA PTA 05/01/2001 4RECS 68%R 99%I LE
899M 48F 40P 441CM\$ 416NM\$ 329FM\$
AJCA 05/01/2001 PTAT 62%R 2.0 PTI 68%R 267

1999 WISCONSIN COW OF THE YEAR
PREMIER PERFORMANCE WINNER, 1996 & 1998
ALL AMERICAN JERSEY SHOW
GRAND CHAMPION, 1996 ALL AMERICAN JUNIOR SHOW
RESERVE INT. CHAMPION, 1996 ALL AMERICAN OPEN SHOW
1ST AGED COW, 1998 ALL AMERICAN JUNIOR SHOW

COMFORT ROYAL ALF-ET
USA 000651068 1JE382
USDA 05/01/2001 10700DAUS 2142HRDS 10%RI P
99%R 295M 0.13% 35F 38%I LE
99%R 0.13% 31P 305CM\$ 268NM\$ 117FM\$
AJCA 05/01/2001 3582DAUS
PTI 99%R 188 PTAT 99%R 0.7

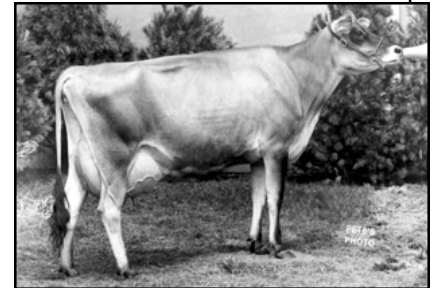
SALVATION BROOK PARAMOUNT 90%
USA 003833612 TATTOO D20 / D20
2-01 305 2 15330 5.0 764 3.8 579 DHIR 1884C
3-01 305 2 18400 5.0 920 3.8 708 DHIR 2304C
5-10 305 2 13140 5.0 654 3.6 470 96DCR V 1528C
305 2X ME AVG 3L 18522M 899F 679P 2209C
PPA 776M 60F 28P
YD 1039M 58F 35P
USDA PTA 05/01/2001 4RECS 72%R 76%I LE
664M 27F 19P 163CM\$ 163NM\$ 170FM\$
AJCA 05/01/2001 PTAT 66%R 1.9 PTI 71%R 131

HIGHLAND DUNCAN LESTER
USA 000645454 29JE2875
USDA 05/01/2001 30310DAUS 4715HRDS 6%RI P
99%R 471M -0.05% 14F 12%I LE
99%R 0% 16P 142CM\$ 137NM\$ 125FM\$
AJCA 05/01/2001 7161DAUS
PTI 99%R 97 PTAT 99%R 1.0

O. F. SOONER ORCHID 91%
USA 003637743 TATTOO J636
2-04 305 2 16030 5.1 820 3.9 620 DHIR 2018C
3-07 305 2 16330 5.4 886 4.1 673 DHIR 2192C
4-08 305 2 15680 4.6 726 3.7 579 DHIR 1883C
305 2X ME AVG 3L 18205M 906F 697P 2268C
PPA 1604M 105F 69P
YD 1507M 106F 66P
USDA PTA 05/01/2001 3RECS 67%R 88%I LE
402M 29F 19P 240CM\$ 228NM\$ 181FM\$
AJCA 05/01/2001 PTAT 62%R 1.5 PTI 67%R 158
SIRE: SOLDIERBOY BOOMER SOONER OF CJF PTI 53 2%I LE

SISTERS(S):
O. F. SQUIRE TAMARA 86%
4-01 305 2 14370 5.7 820 4.2 609 DHIR 1984C
O. F. BRASS TOP IVORY 91%
3-01 302 2 18260 4.9 890 3.8 687 DHIR 2235C

NEXT DAM:
O. F. JEREMY IVY 88%
8-02 305 2 13670 5.4 738 4.1 554 DHIR 1804C
SIRE: O. F. MMC JEREMY PTI -297 0%I LE



O. F. SOONER ORCHID
Grandam of Lot 10



O. F. ALF ORCHID
Sister of Lot 10